



1 Rhythm

/15

1.1 (a)  (3)

(b) 

(c) 

1.2 (5)

(a) 

(b) 

(c) 

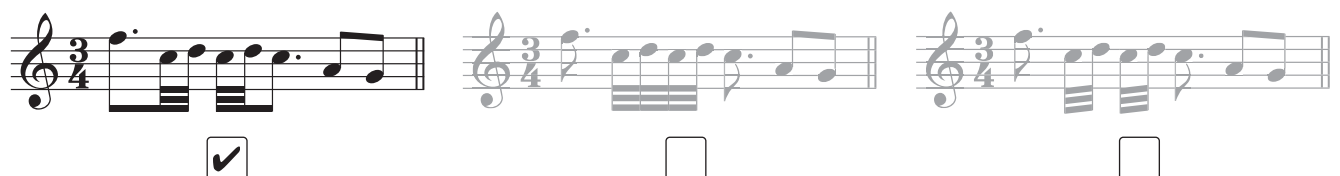
(d) 

(e) 

1.3 6 (1)

1.4 simple triple (1)

1.5 (1)



1.6 (3)



1.7 (1)



## 2 Pitch

/15

2.1 (a) C (b) G (c) F# (6)

(d) G#




(e) D#

(f) F

2.2 (a) TRUE (3)

(b) TRUE

(c) TRUE

2.3 (a)  (b)  (c)  (d)  (4)

2.4 (a) (1)



(b) (1)



3.1 (1)



3.2 (1)



3.3 (3)



3.4 (a) Ab major (3)

(b) C minor

(c) G minor

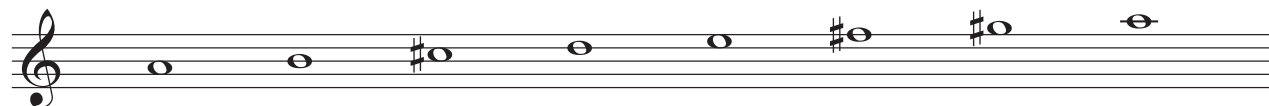
3.5 (2)



3.6 X Eb (2)

Y G

3.7 (a) (1)



(b)

(1)

Three musical staves in bass clef showing a sequence of notes: B $\flat$ , E $\flat$ , G, B $\flat$ , D, E, F, G $\flat$ . The first staff has a checkmark in a box to its right. The second and third staves have empty boxes to their right.

(c)

(1)

Three musical staves in bass clef showing a sequence of notes: G $\sharp$ , B, D, G $\sharp$ , B, D, G $\sharp$ , B. The first two staves have empty boxes to their right. The third staff has a checkmark in a box to its right.

## 4 Intervals

/10

4.1

(6)

(a)

(b)

(c)

(d)

(e)

(f)

4.2 (a) major

(4)

(b) perfect

(c) minor

(d) perfect

## 5 Tonic Triads

/10

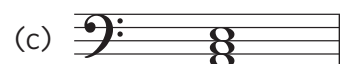
5.1 (a) **TRUE**

(2)

(b) **TRUE**

5.2

(3)



5.3 (a) G major

(5)

(b) D minor

(c) A $\flat$  major

(d) D major

(e) C $\sharp$  minor

## 6 Terms and Signs

/5

**alla marcia** means:

in the style of a march

**prestissimo** means:

very fast

*sempre* means:

always

(5)



slight pressure

**alargando** means:

broadening

## 7 Music in Context

/5

7.1 They are all different from the original

(1)

7.2 **TRUE**

(1)

7.3 (a) E $\flat$

(3)

(b) bar 5

(c) bar 2